

# Dual Laser InfraRed Thermometer

## High IR Temperature Range

Fast 100mS response with highest accuracy at point where dual lasers converge plus Type K input and USB interface

### Features:

- High 50:1 distance to target ratio measures smaller surface areas at greater distances
- Lock function for continuous readings
- MAX/MIN/AVG/DIF feature displays highest, lowest, average, and MAX minus Min values
- Adjustable High/Low set points with audible alarm alerts user when temperature exceeds the programmed set points
- Tripod mounting feature
- Complete with Type K Temperature probe, USB cable and software, tripod, carrying case and 9V battery



Dual Laser

### Our Fastest and Easiest-to-use IR Thermometer

- ✓ Dual lasers identify exact measuring spot when they converge to a single spot
- ✓ Fast response is ideal for quick checks of multiple spots in a process or for catching spikes in temperature



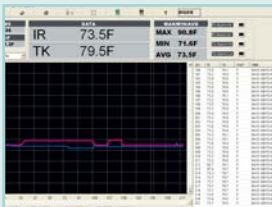
Fast response captures hot spots



Two laser points converge at a distance of 127cm(50") and form a 2.5cm (1") spot.



Max hold indicates and holds the peak temperature for easy identification of hot spots



Use the Lock function for continuous data transfer to your PC with the included USB cable & software.

Specifications	42570
Laser Convergence Distance	127cm (50")
IR Range	-50 to 2200°C (-58 to 3992°F)
Repeatability	±0.5% or 1°C/1.8°F
Basic Accuracy	±(1% of rdg + 1°C/2°F)
Max resolution	0.1°C/°F
Emissivity	0.10 to 1.00 Adjustable
Field of View (Distance to Target)	50:1
Type K Range	-50 to 1370°C (-58 to 2498°F)
Memory	Manually Store/Recall 100 readings
Dimensions	204x155x52mm (8x6.1x2")
Weight	320g (11.3oz)

### Ordering Information:

42570 .....50:1 Dual Laser InfraRed Thermometer

